

Vermont Forensic Laboratory Blood and Breath Alcohol Testing



Overview

- * Senior Forensic Chemist / Alcohol Section Supervisor
- * Two Forensic Chemists
- * DMT Technician
- * Evidence Technician / Administrative Assistant

Overview

- * Blood Alcohol Analysis by GC/FID
- * DMT Evidential Breath Alcohol Instrument Oversight
 - * Calibration, Certification, Repair and Officer Training
- * Alcohol Physiology, Pharmacology, Testing and Impairment Expert Testimony

Expert Testimony

- * 2014: 517 Affidavit requests, 39* hearings/trials
- * 2015: 419 Affidavit requests, 38 hearings/trials
- * 2016 to date: 210 Affidavit requests, 8 hearings/trials

*105 subpoenas

Blood Testing

- * Blood alcohol analyzed by gas chromatography with dual flame ionization detection.
- * Perkin Elmer GC-FID and TurboMatrix 110 autosampler purchased in 2015 with GHSP grant.



Blood Testing

- * 2014
 - * 150 blood-alcohol samples analyzed by VFL
 - * 158 blood-drug samples sent to NMS for analysis
- * 2015
 - * 180 blood-alcohol samples analyzed by VFL
 - * 191 blood-drug samples sent to NMS for analysis
- * 2016 (thru 6/30)
 - * 85 blood-alcohol samples analyzed by VFL
 - * 104 blood-drug samples sent to NMS for analysis

Blood Testing

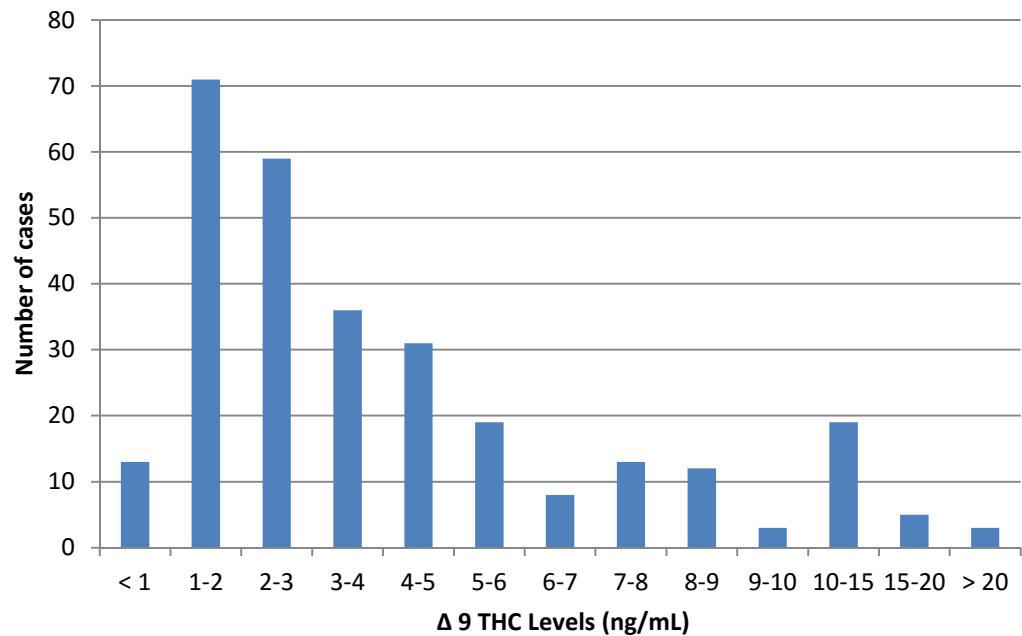
Classes of Frequently Found Drugs*				
Drug Class	2016		2015	
	Number of cases	% of total	Number of cases	% of Total
Cannabis	148	42.4%	212	41.3%
Narcotic Analgesics--Opiates	33	9.5%	57	11.1%
Narcotic Analgesics--Synthetics	25	7.2%	23	4.5%
CNS Depressants--Anti-Anxiety Tranquilizers	32	9.2%	133	25.9%
CNS Depressants--Anti- Depressants	28	8.0%	36	7.0%
CNS Depressants--Non- barbiturates		0.0%	7	1.4%
CNS Stimulants--Cocaine	10	2.9%	17	3.3%
CNS Stimulants--Amphetamines		0.0%	13	2.5%
Other		0.0%	15	2.9%
*Each case may have more than 1 drug per class i.e. Delta-9 Carboxy and Delta-9 THC will count as 2				

Top Drugs Found in NMS testing 2015-2016

Top 20 Drugs Found in 2016		Top 25 Drugs Found in 2015	
Delta-9 Carboxy THC	54	Delta-9 Carboxy THC	102
Delta-9 THC	53	Delta-9 THC	80
11-Hydroxy Delta-9 THC	41	Morphine-Free	37
Morphine-Free	15	Clonazepam	34
Lorazepam	13	7-Amino Clonazepam	34
Benzoylecgonine	10	11-Hydroxy Delta-9 THC	30
Clonazepam	8	Alprazolam	19
7-Amino Clonazepam	7	Benzoylecgonine	17
Fentanyl	7	Diazepam	14
Hydroxybupropion	7	Nordiazepam	14
Methadone	7	Amphetamine	13
Oxycodone-Free	7	Oxycodone-Free	12
Codeine-Free	6	Lorazepam	11
Fluoxetine	6	Methadone	9
Norfentanyl	6	Fluoxetine	9
Norfluoxetine	6	Norfluoxetine	9
Bupropion	5	Lamotrigine	9
EDDP	5	Codeine-Free	8
Oxymorphone-Free	5	Fentanyl	7
Alprazolam	4	Norfentanyl	7
Trazodone	4	Zolpidem	7
		Oxazepam	7
		Hydroxybupropion	6
		Chlorpheniramine	6
		O-desmethylvenlafaxine	6
		Venlafaxine	6
Times top 20 drug identified	276	Times top 25 drug identified	513
Total drugs 2016	349	Total Compounds in 2015	633
Total Cases in 2016	103	Total Cases in 2015	191

THC Results from NMS Testing							
	Combined Data	2012	2013	2014	2015	2016	THC Only
Total Positives	292	29	63	67	80	53	151
Average Δ 9 THC	4.32	3.69	3.99	4.55	3.69	5.74	4.85
Median	3.1	3.5	3.2	3.1	2.45	3.6	3.6
Min	0.61	1	1	1	0.61	0.68	0.68
Max	24	10	10	17	24	24	24
Number tests \geq 5 ng/mL	82	6	17	19	19	21	52
% tests \geq 5 ng/mL	28.1%	20.7%	27.0%	28.4%	23.8%	39.6%	34.4%
Number tests \geq 2.5 ng/mL	179	18	44	43	19	34	101
% tests \geq 2.5 ng/mL	61.3%	62.1%	69.8%	64.2%	23.8%	64.2%	66.9%
# times THC tested for	728	*estimate based on 8150 and 8071 panels from NMS summary					
% positive	40.1%						

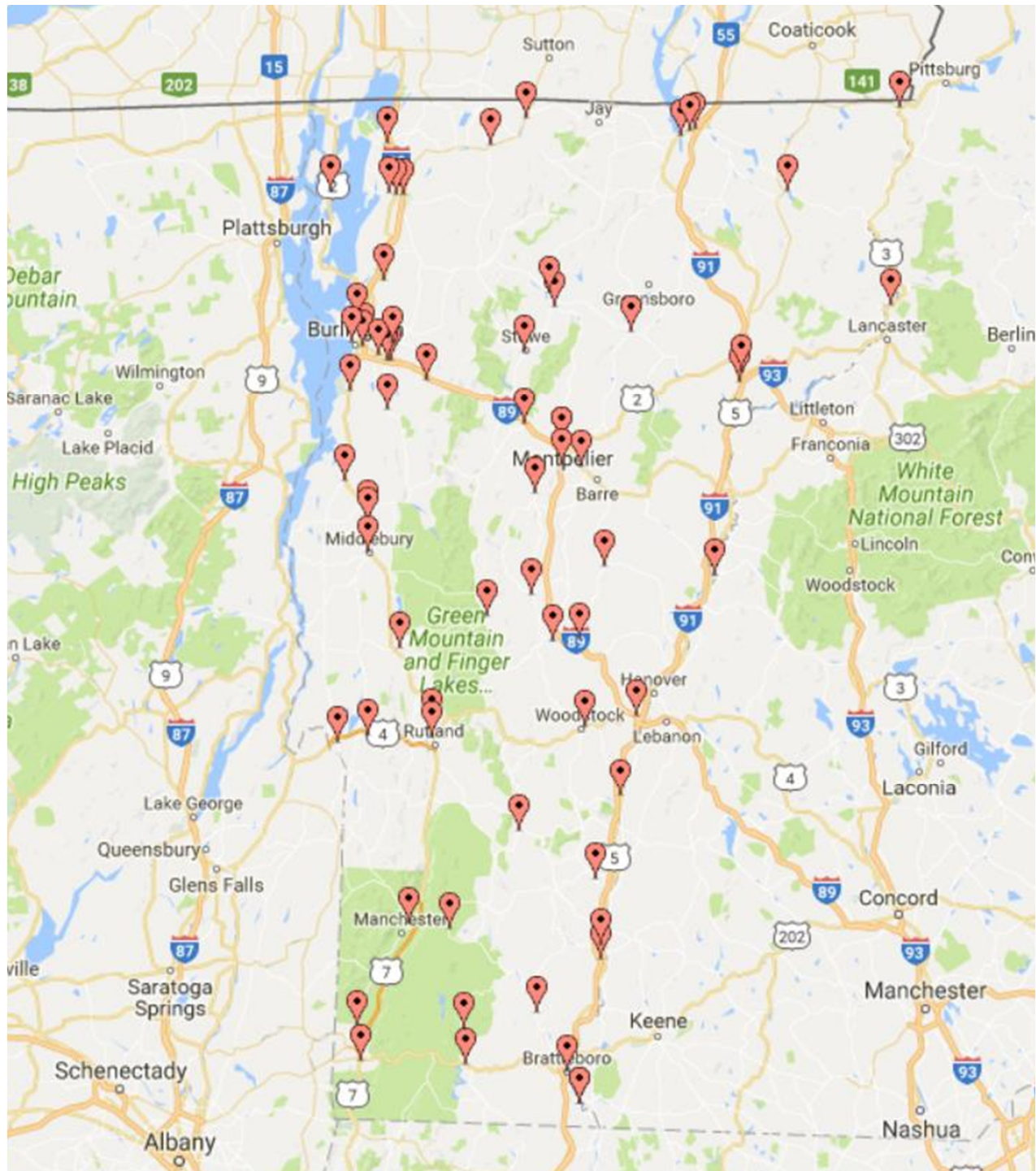
**Δ 9 THC Levels in DUI arrested drivers with Tox screen performed
2012 - July, 2016**



Breath Testing

- * 79 DMT evidential infrared breath testing instruments
- * 68 agencies operating DMTs in the field
- * Most instruments purchased with GHSP grant funds
- * 2015: software update to allow Ethernet connection and HOST data storage (complete)
- * 2016: simulator replacement and hardware upgrade (in process)





Breath Testing Data Analysis

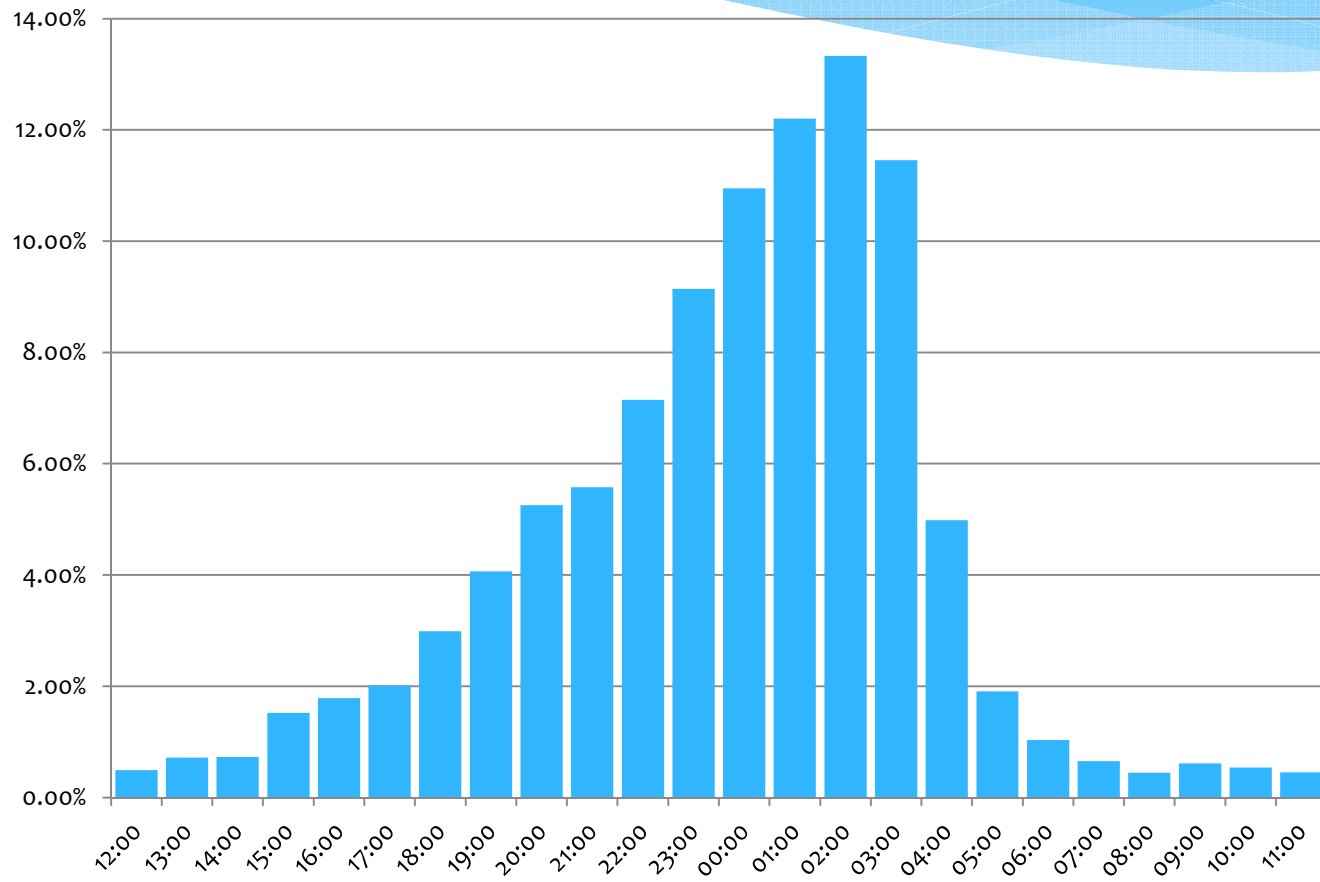
- * Data from September 2011 – June 2016
- * Attempt to remove training, testing, and troubleshooting results from true data
- * >10,000 test results

No Result Tests

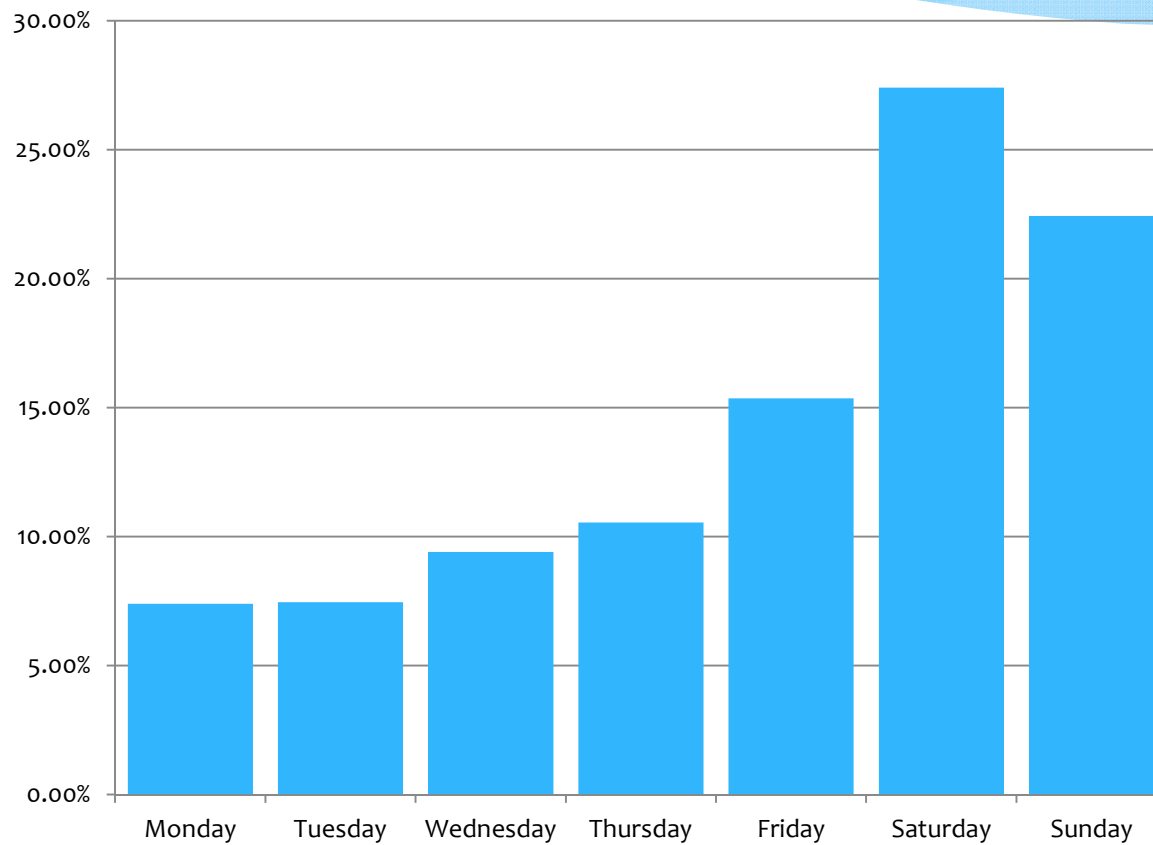
- * Instrument error: 14.3%
 - * Simulator out of range: 5.4%
 - * Blank Error/Ambient Fail: 1.25%
- * Sample error: 8.5%
 - * Incomplete: 5.9%
 - * Invalid sample rate: 1.4%
 - * Interference rate: 0.8%
 - * Suck back error 0.2%
- * Refusal rate: 15%*

*Data based on total number of "refused" tests; may include tests classified as refusal due to observation period restart etc.

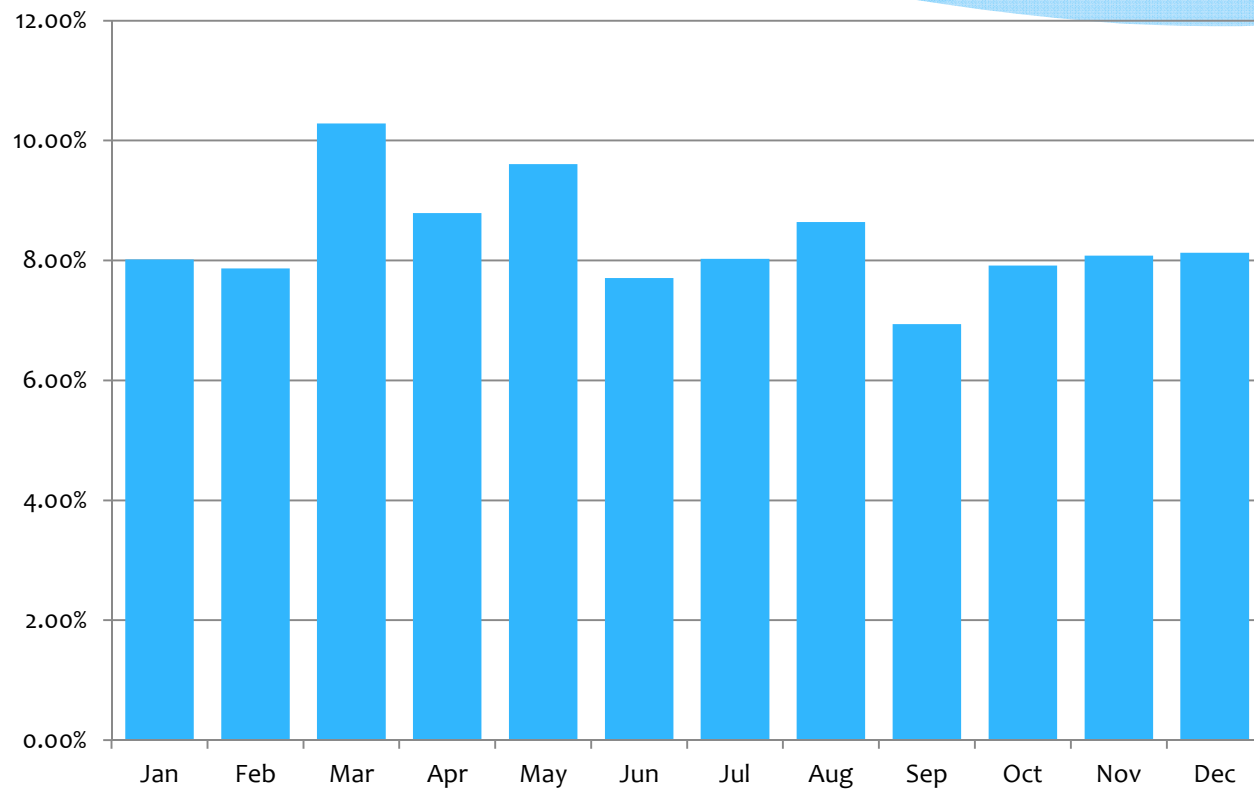
Time of Day



Day of Week



Month of Year

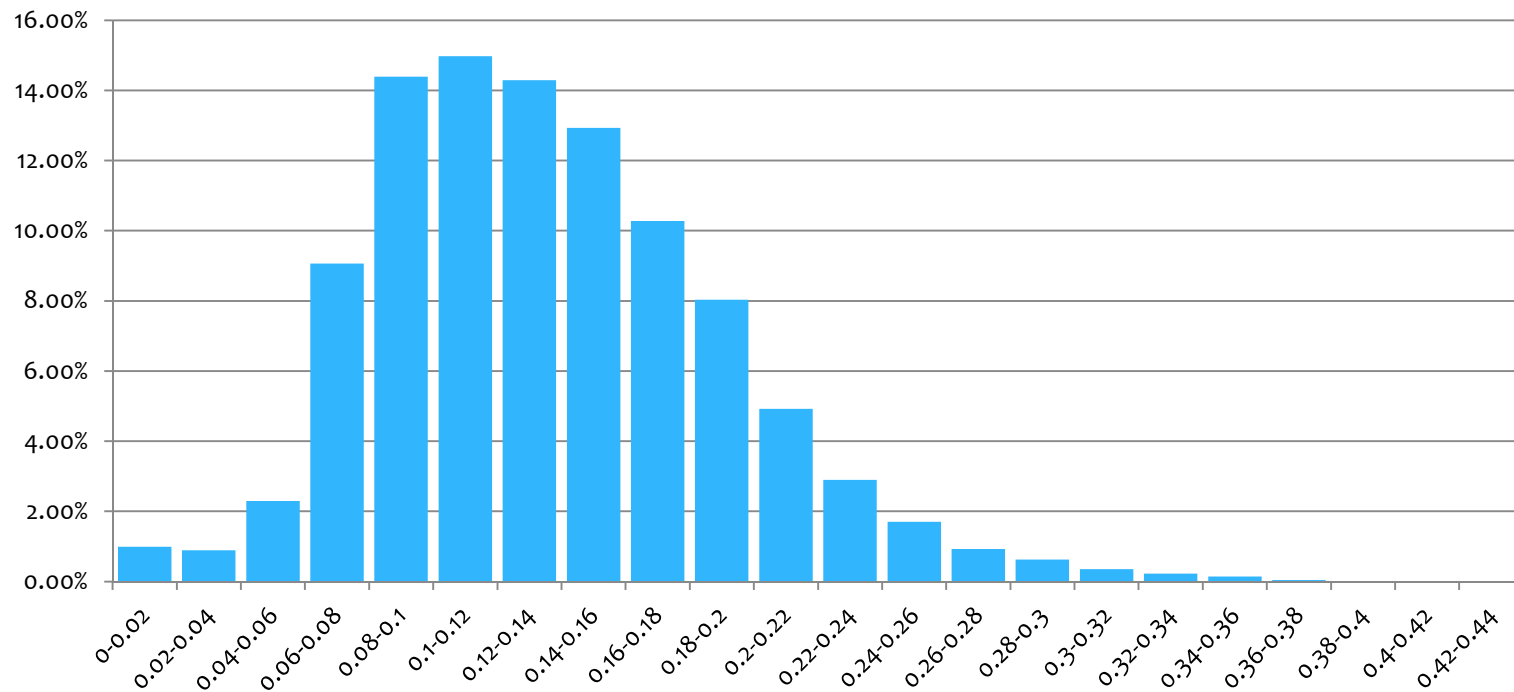


Holidays and Weekends

- * Highest daily test average, 2012-2016:
 - * Jan 1: 16.8
 - * Nov 1: 14
 - * Mar 17: 13.8
- * Highest one-day overall:
 - * Sunday, March 17, 2013: 28
- * Average weekend: ~28 tests
- * Highest weekend overall:
 - * Oct 30 – Nov 1, 2015: 56

Test Results

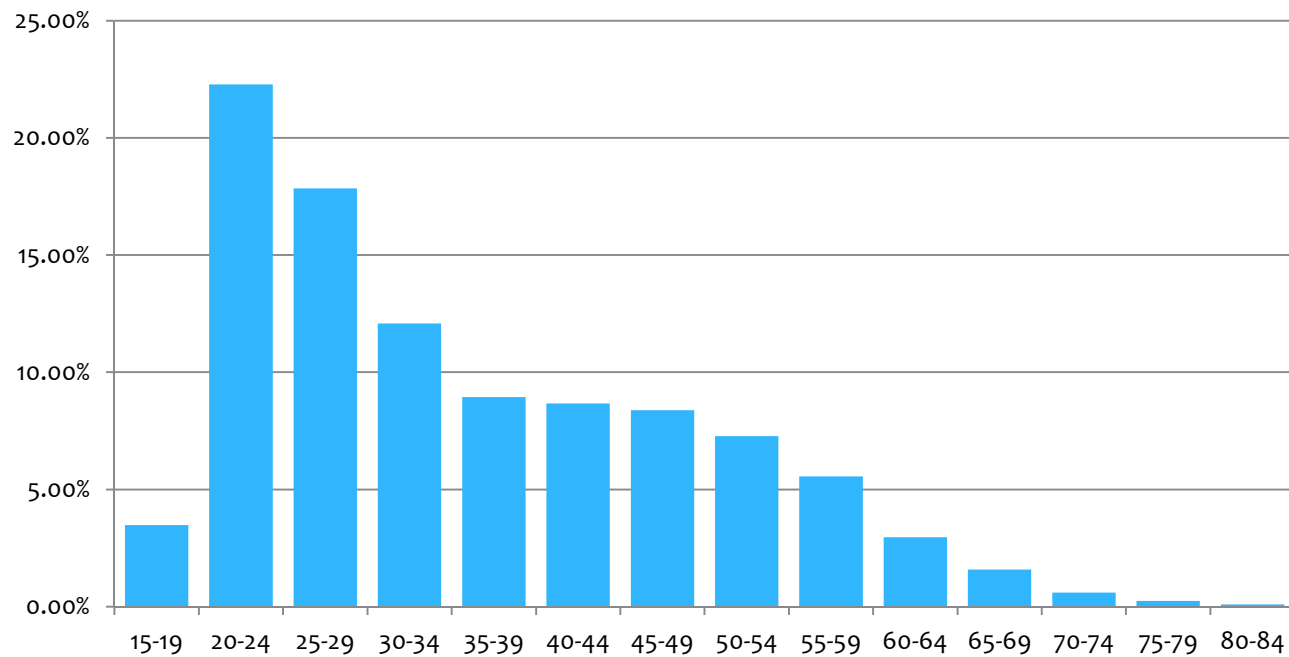
Average BrAC:
0.136 (mean)
0.130 (median)
Highest result: 0.435



Demographics

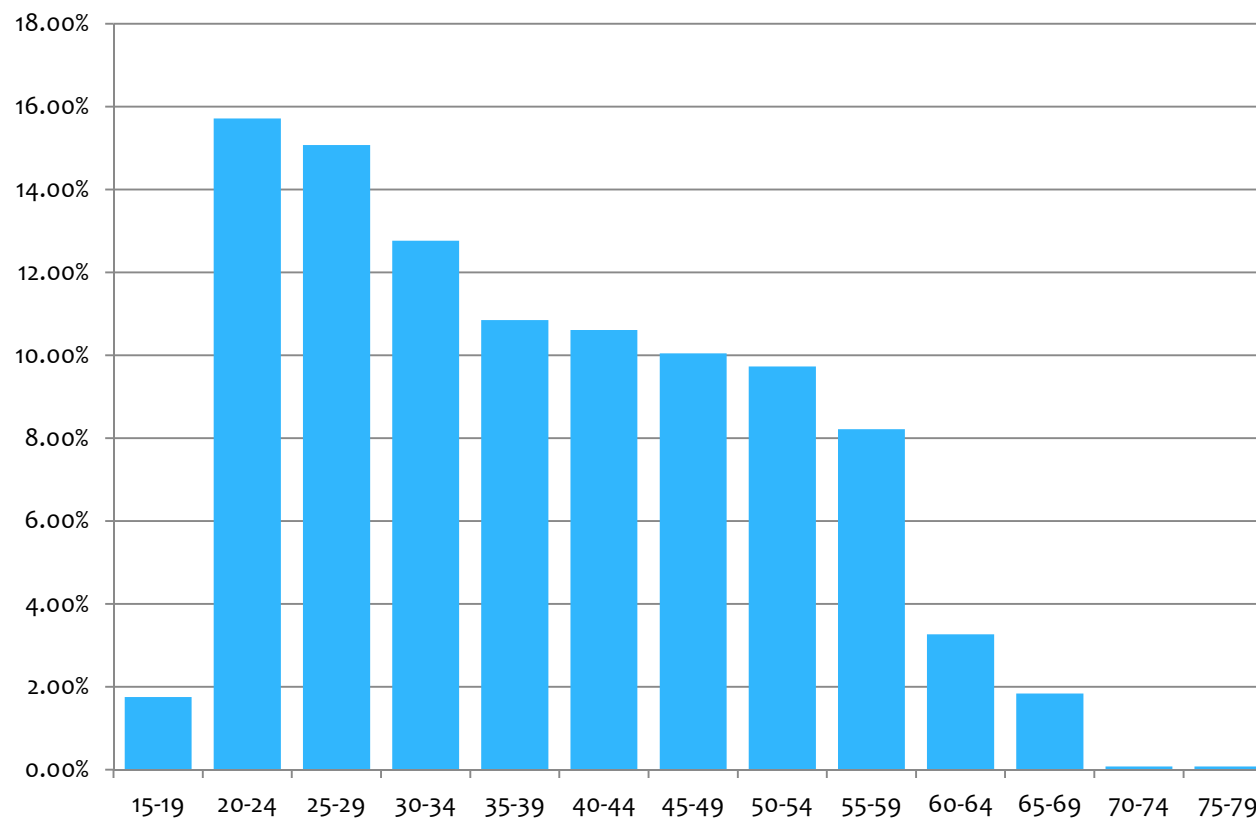
* ~75% male, 25% female

* Age:



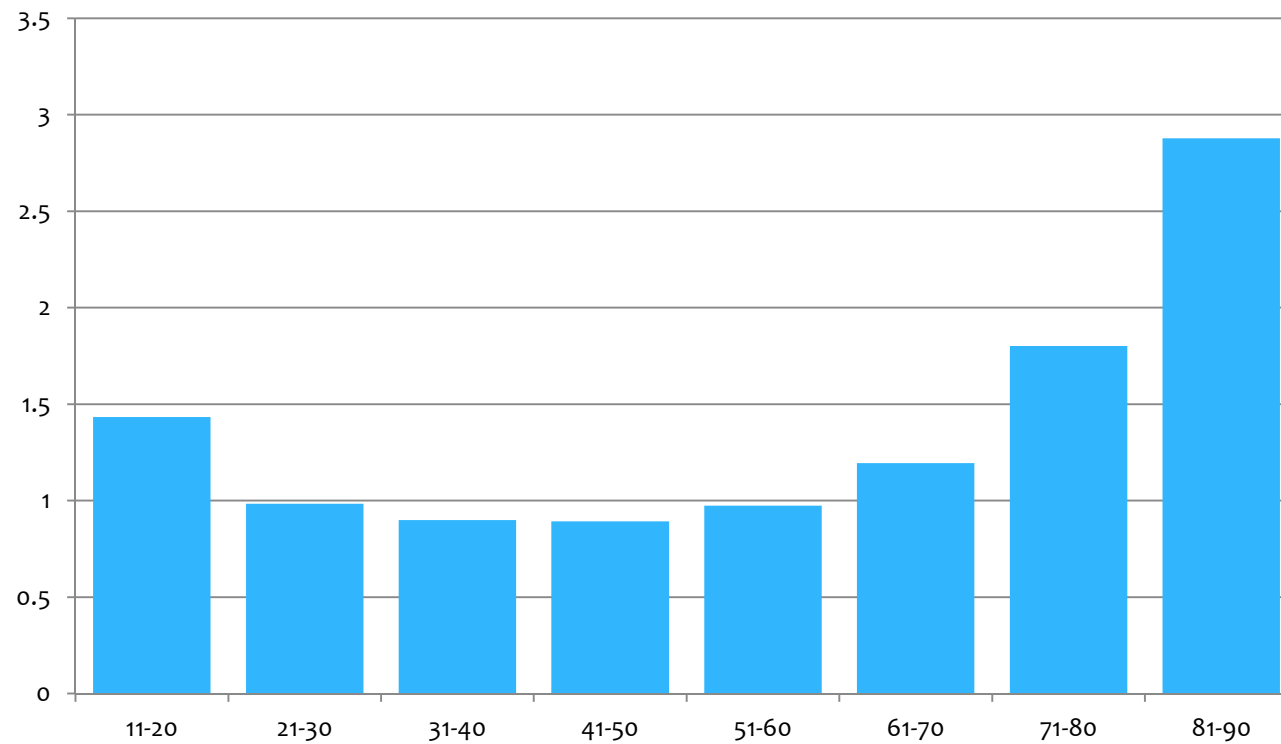
High Tests (>0.20 g/210 L)

* Age:



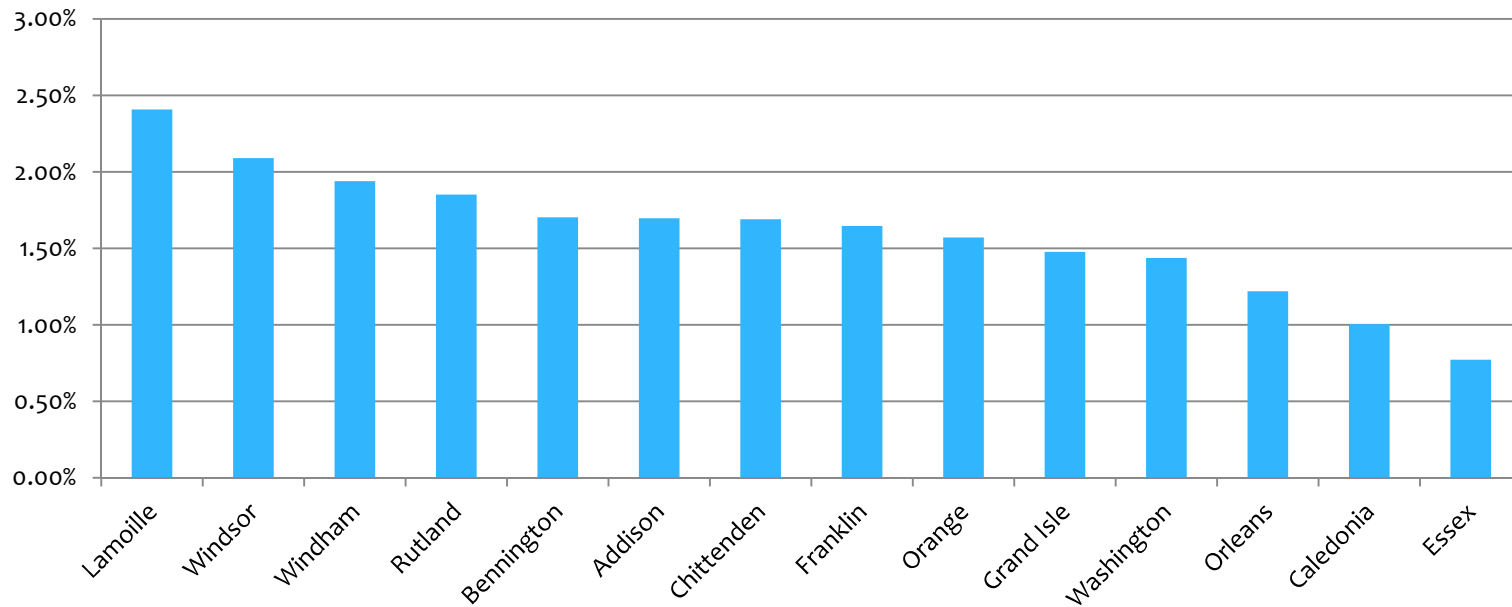
Relative Risk

Relative Risk by Age: Crash vs. Stop



Geography

Tests by County per Capita*



*Based on 2012 census population data

Tests per Capita by Town

